

PHILIPPINE BIDDING DOCUMENTS



Public Bidding for the Construction / Repair / Rehabilitation and Landscaping of People's Park at Barangay Baybay, Roxas City under ITB No. RC-2022-008i

Government of the Republic of the
Philippines

Sixth Edition
July 2020

TABLE OF CONTENTS

Glossary of Terms, Abbreviations, and Acronyms.....	4
Section I. Invitation to Bid	7
Section II. Instructions to Bidders.....	10
1. Scope of Bid.....	11
2. Funding Information	11
3. Bidding Requirements.....	11
4. Corrupt, Fraudulent, Collusive, Coercive, and Obstructive Practices	11
5. Eligible Bidders	12
6. Origin of Associated Goods	12
7. Subcontracts	12
8. Pre-Bid Conference	13
9. Clarification and Amendment of Bidding Documents	13
10. Documents Comprising the Bid: Eligibility and Technical Components.....	13
11. Documents Comprising the Bid: Financial Component.....	14
12. Alternative Bids	14
13. Bid Prices	14
14. Bid and Payment Currencies	14
15. Bid Security	14
16. Sealing and Marking of Bids	15
17. Deadline for Submission of Bids.....	15
18. Opening and Preliminary Examination of Bids	15
19. Detailed Evaluation and Comparison of Bids	15
20. Post Qualification	16
21. Signing of the Contract	16
Section III. Bid Data Sheet.....	17
Section IV. General Conditions of Contract	19
1. Scope of Contract	20
2. Sectional Completion of Works.....	20
3. Possession of Site.....	20
4. The Contractor's Obligations	20
5. Performance Security	21

6.	Site Investigation Reports	21
7.	Warranty	21
8.	Liability of the Contractor	21
9.	Termination for Other Causes.....	21
10.	Dayworks	22
11.	Program of Work.....	22
12.	Instructions, Inspections and Audits	22
13.	Advance Payment.....	22
14.	Progress Payments.....	23
15.	Operating and Maintenance Manuals.....	23
Section V. Special Conditions of Contract		24
Section VI. Specifications		26
Section VII. Drawings.....		27
Section VIII. Bill of Quantities		34
Section IX. Checklist of Technical and Financial Documents		52

Glossary of Terms, Abbreviations, and Acronyms

ABC – Approved Budget for the Contract.

ARCC – Allowable Range of Contract Cost.

BAC – Bids and Awards Committee.

Bid – A signed offer or proposal to undertake a contract submitted by a bidder in response to and in consonance with the requirements of the bidding documents. Also referred to as *Proposal* and *Tender*. (2016 revised IRR, Section 5[c])

Bidder – Refers to a contractor, manufacturer, supplier, distributor and/or consultant who submits a bid in response to the requirements of the Bidding Documents. (2016 revised IRR, Section 5[d])

Bidding Documents – The documents issued by the Procuring Entity as the bases for bids, furnishing all information necessary for a prospective bidder to prepare a bid for the Goods, Infrastructure Projects, and/or Consulting Services required by the Procuring Entity. (2016 revised IRR, Section 5[e])

BIR – Bureau of Internal Revenue.

BSP – Bangko Sentral ng Pilipinas.

CDA – Cooperative Development Authority.

Consulting Services – Refer to services for Infrastructure Projects and other types of projects or activities of the GOP requiring adequate external technical and professional expertise that are beyond the capability and/or capacity of the GOP to undertake such as, but not limited to: (i) advisory and review services; (ii) pre-investment or feasibility studies; (iii) design; (iv) construction supervision; (v) management and related services; and (vi) other technical services or special studies. (2016 revised IRR, Section 5[i])

Contract – Refers to the agreement entered into between the Procuring Entity and the Supplier or Manufacturer or Distributor or Service Provider for procurement of Goods and Services; Contractor for Procurement of Infrastructure Projects; or Consultant or Consulting Firm for Procurement of Consulting Services; as the case may be, as recorded in the Contract Form signed by the parties, including all attachments and appendices thereto and all documents incorporated by reference therein.

Contractor – is a natural or juridical entity whose proposal was accepted by the Procuring Entity and to whom the Contract to execute the Work was awarded. Contractor as used in these Bidding Documents may likewise refer to a supplier, distributor, manufacturer, or consultant.

CPI – Consumer Price Index.

DOLE – Department of Labor and Employment.

DTI – Department of Trade and Industry.

Foreign-funded Procurement or Foreign-Assisted Project – Refers to procurement whose funding source is from a foreign government, foreign or international financing institution as specified in the Treaty or International or Executive Agreement. (2016 revised IRR, Section 5[b]).

GFI – Government Financial Institution.

GOCC – Government-owned and/or –controlled corporation.

Goods – Refer to all items, supplies, materials and general support services, except Consulting Services and Infrastructure Projects, which may be needed in the transaction of public businesses or in the pursuit of any government undertaking, project or activity, whether in the nature of equipment, furniture, stationery, materials for construction, or personal property of any kind, including non-personal or contractual services such as the repair and maintenance of equipment and furniture, as well as trucking, hauling, janitorial, security, and related or analogous services, as well as procurement of materials and supplies provided by the Procuring Entity for such services. The term “related” or “analogous services” shall include, but is not limited to, lease or purchase of office space, media advertisements, health maintenance services, and other services essential to the operation of the Procuring Entity. (2016 revised IRR, Section 5[r])

GOP – Government of the Philippines.

Infrastructure Projects – Include the construction, improvement, rehabilitation, demolition, repair, restoration or maintenance of roads and bridges, railways, airports, seaports, communication facilities, civil works components of information technology projects, irrigation, flood control and drainage, water supply, sanitation, sewerage and solid waste management systems, shore protection, energy/power and electrification facilities, national buildings, school buildings, hospital buildings, and other related construction projects of the government. Also referred to as *civil works or works*. (2016 revised IRR, Section 5[u])

LGUs – Local Government Units.

NFCC – Net Financial Contracting Capacity.

NGA – National Government Agency.

PCAB – Philippine Contractors Accreditation Board.

PhilGEPS - Philippine Government Electronic Procurement System.

Procurement Project – refers to a specific or identified procurement covering goods, infrastructure project or consulting services. A Procurement Project shall be described, detailed, and scheduled in the Project Procurement Management Plan prepared by

the agency which shall be consolidated in the procuring entity's Annual Procurement Plan. (GPPB Circular No. 06-2019 dated 17 July 2019)

PSA – Philippine Statistics Authority.

SEC – Securities and Exchange Commission.

SLCC – Single Largest Completed Contract.

UN – United Nations.

Section I. Invitation to Bid



Republic of the Philippines
CITY OF ROXAS
City Hall, Roxas City 5800
(036) 620-5220

BIDS AND AWARDS COMMITTEE OFFICE

Invitation to Bid for

Public Bidding for the Construction / Repair / Rehabilitation and Landscaping of People's Park at Barangay Baybay, Roxas City under ITB No. RC-2022-008i

1. The *Roxas City Government*, through the *GOP-2022* intends to apply the sum of ***One Hundred Forty-five Million Six Hundred Nineteen Thousand Four Hundred Sixty-eight Pesos and 13/100 (145,619,468.13)*** being the Approved Budget for the Contract (ABC) to payments under the contract for ***Public Bidding for the Construction / Repair / Rehabilitation and Landscaping of People's Park at Barangay Baybay, Roxas City under ITB No. RC-2022-008i***. Bids received in excess of the ABC shall be automatically rejected at bid opening.
2. The *Roxas City Government* now invites bids for the above Procurement Project. Completion of the Works is required ***Three Hundred Sixty (360) Calendar Days***.

Bidders should have completed a contract similar to the Project. The description of an eligible bidder is contained in the Bidding Documents, particularly, in Section II (Instructions to Bidders).

3. Bidding will be conducted through open competitive bidding procedures using non-discretionary "*pass/fail*" criterion as specified in the 2016 revised Implementing Rules and Regulations (IRR) of Republic Act (RA) No. 9184.
4. Interested bidders may obtain further information from *Roxas City Government* and inspect the Bidding Documents at the address given below from ***8:00 a.m. to 5:00 p.m.***
5. A complete set of Bidding Documents may be acquired by interested bidders on ***November 3, 2022 to November 22, 2022*** from given address and website/s below *and upon payment of the applicable fee for the Bidding Documents, pursuant to the latest Guidelines issued by the GPPB, in the amount of Fifty Thousand Pesos (Php50,000.00)*. The Procuring Entity shall allow the bidder to present its proof of payment for the fees ***to be presented in person***.
6. The *Roxas City Government* will hold a Pre-Bid Conference on ***November 10, 2022, 10:00 a.m.***, at ***2nd Floor – Conference Room, City Mayor's Office, Roxas City Government***, which shall be open to prospective bidders.

7. Bids must be duly received by the BAC Secretariat through manual submission at the office address as indicated below on or before **November 22, 2022 at 10:00 a.m.** Late bids shall not be accepted.
8. All bids must be accompanied by a bid security in any of the acceptable forms and in the amount stated in **ITB** Clause 15.
9. Bid opening shall be on **November 22, 2022 at 10:00 a.m.** at the given address below. Bids will be opened in the presence of the bidders' representatives who choose to attend the activity.
10. The *Roxas City Government* reserves the right to reject any and all bids, declare a failure of bidding, or not award the contract at any time prior to contract award in accordance with Sections 35.6 and 41 of the 2016 revised Implementing Rules and Regulations (IRR) of RA No. 9184, without thereby incurring any liability to the affected bidder or bidders.
11. For further information, please refer to:

*Megan G. Barrientos
BAC Office
Arzobispo St., Roxas City
bacroxascity19@gmail.com
(036) 620-5220*

12. You may visit the following websites:

For downloading of Bidding Documents: *PhilGEPS.gov.ph*

November 3, 2022

LORIE BELLE O. USISON
BAC Chairperson

Section II. Instructions to Bidders

1. Scope of Bid

The Procuring Entity, *Roxas City Government* invites Bids for ***Public Bidding for the Construction / Repair / Rehabilitation and Landscaping of People's Park at Barangay Baybay, Roxas City under ITB No. RC-2022-008i.***

The Procurement Project (referred to herein as "Project") is for the construction of Works, as described in Section VI (Specifications).

2. Funding Information

2.1. The GOP through the source of funding as indicated below for *GOP-2021* in the amount of ***One Hundred Forty-five Million Six Hundred Nineteen Thousand Four Hundred Sixty-eight Pesos and 13/100 (145,619,468.13).***

2.2. The source of funding is:

LGUs, the Annual or Supplemental Budget, as approved by the Sanggunian.

3. Bidding Requirements

The Bidding for the Project shall be governed by all the provisions of RA No. 9184 and its 2016 revised IRR, including its Generic Procurement Manual and associated policies, rules and regulations as the primary source thereof, while the herein clauses shall serve as the secondary source thereof.

Any amendments made to the IRR and other GPPB issuances shall be applicable only to the ongoing posting, advertisement, or invitation to bid by the BAC through the issuance of a supplemental or bid bulletin.

The Bidder, by the act of submitting its Bid, shall be deemed to have inspected the site, determined the general characteristics of the contracted Works and the conditions for this Project, such as the location and the nature of the work; (b) climatic conditions; (c) transportation facilities; (c) nature and condition of the terrain, geological conditions at the site communication facilities, requirements, location and availability of construction aggregates and other materials, labor, water, electric power and access roads; and (d) other factors that may affect the cost, duration and execution or implementation of the contract, project, or work and examine all instructions, forms, terms, and project requirements in the Bidding Documents.

4. Corrupt, Fraudulent, Collusive, Coercive, and Obstructive Practices

The Procuring Entity, as well as the Bidders and Contractors, shall observe the highest standard of ethics during the procurement and execution of the contract. They or through an agent shall not engage in corrupt, fraudulent,

collusive, coercive, and obstructive practices defined under Annex "I" of the 2016 revised IRR of RA No. 9184 or other integrity violations in competing for the Project.

5. Eligible Bidders

- 5.1. Only Bids of Bidders found to be legally, technically, and financially capable will be evaluated.
- 5.2. The Bidder must have an experience of having completed a Single Largest Completed Contract (SLCC) that is similar to this Project, equivalent to at least fifty percent (50%) of the ABC adjusted, if necessary, by the Bidder to current prices using the PSA's CPI, except under conditions provided for in Section 23.4.2.4 of the 2016 revised IRR of RA No. 9184.

A contract is considered to be "similar" to the contract to be bid if it has the major categories of work stated in the **BDS**.

- 5.3. For Foreign-funded Procurement, the Procuring Entity and the foreign government/foreign or international financing institution may agree on another track record requirement, as specified in the Bidding Document prepared for this purpose.
- 5.4. The Bidders shall comply with the eligibility criteria under Section 23.4.2 of the 2016 IRR of RA No. 9184.

6. Origin of Associated Goods

There is no restriction on the origin of Goods other than those prohibited by a decision of the UN Security Council taken under Chapter VII of the Charter of the UN.

7. Subcontracts

- 7.1. The Bidder may subcontract portions of the Project to the extent allowed by the Procuring Entity as stated herein, but in no case more than fifty percent (50%) of the Project.

The Procuring Entity has prescribed that:

- a. Subcontracting is not allowed.
- 7.1. Subcontracting of any portion of the Project does not relieve the Contractor of any liability or obligation under the Contract. The Supplier will be responsible for the acts, defaults, and negligence of any subcontractor, its agents, servants, or workmen as fully as if these were the Contractor's own acts, defaults, or negligence, or those of its agents, servants, or workmen.

8. Pre-Bid Conference

The Procuring Entity will hold a pre-bid conference for this Project on the specified date and time and either at its physical address as indicated in paragraph 6 of the **IB**.

9. Clarification and Amendment of Bidding Documents

Prospective bidders may request for clarification on and/or interpretation of any part of the Bidding Documents. Such requests must be in writing and received by the Procuring Entity, either at its given address or through electronic mail indicated in the **IB**, at least ten (10) calendar days before the deadline set for the submission and receipt of Bids.

10. Documents Comprising the Bid: Eligibility and Technical Components

- 10.1. The first envelope shall contain the eligibility and technical documents of the Bid as specified in **Section IX. Checklist of Technical and Financial Documents**.
- 10.2. If the eligibility requirements or statements, the bids, and all other documents for submission to the BAC are in foreign language other than English, it must be accompanied by a translation in English, which shall be authenticated by the appropriate Philippine foreign service establishment, post, or the equivalent office having jurisdiction over the foreign bidder's affairs in the Philippines. For Contracting Parties to the Apostille Convention, only the translated documents shall be authenticated through an apostille pursuant to GPPB Resolution No. 13-2019 dated 23 May 2019. The English translation shall govern, for purposes of interpretation of the bid.
- 10.3. A valid PCAB License is required, and in case of joint ventures, a valid special PCAB License, and registration for the type and cost of the contract for this Project. Any additional type of Contractor license or permit shall be indicated in the **BDS**.
- 10.4. A List of Contractor's key personnel (e.g., Project Manager, Project Engineers, Materials Engineers, and Foremen) assigned to the contract to be bid, with their complete qualification and experience data shall be provided. These key personnel must meet the required minimum years of experience set in the **BDS**.
- 10.5. A List of Contractor's major equipment units, which are owned, leased, and/or under purchase agreements, supported by proof of ownership, certification of availability of equipment from the equipment lessor/vendor for the duration of the project, as the case may be, must meet the minimum requirements for the contract set in the **BDS**.

11. Documents Comprising the Bid: Financial Component

- 11.1. The second bid envelope shall contain the financial documents for the Bid as specified in **Section IX. Checklist of Technical and Financial Documents**.
- 11.2. Any bid exceeding the ABC indicated in paragraph 1 of the **IB** shall not be accepted.
- 11.3. For Foreign-funded procurement, a ceiling may be applied to bid prices provided the conditions are met under Section 31.2 of the 2016 revised IRR of RA No. 9184.

12. Alternative Bids

Bidders shall submit offers that comply with the requirements of the Bidding Documents, including the basic technical design as indicated in the drawings and specifications. Unless there is a value engineering clause in the **BDS**, alternative Bids shall not be accepted.

13. Bid Prices

All bid prices for the given scope of work in the Project as awarded shall be considered as fixed prices, and therefore not subject to price escalation during contract implementation, except under extraordinary circumstances as determined by the NEDA and approved by the GPPB pursuant to the revised Guidelines for Contract Price Escalation guidelines.

14. Bid and Payment Currencies

- 14.1. Bid prices may be quoted in the local currency or tradeable currency accepted by the BSP at the discretion of the Bidder. However, for purposes of bid evaluation, Bids denominated in foreign currencies shall be converted to Philippine currency based on the exchange rate as published in the BSP reference rate bulletin on the day of the bid opening.
- 14.2. *Payment of the contract price shall be made in: Philippine Pesos.*

15. Bid Security

- 15.1. The Bidder shall submit a Bid Securing Declaration or any form of Bid Security in the amount indicated in the **BDS**, which shall be not less than the percentage of the ABC in accordance with the schedule in the **BDS**.
- 15.2. The Bid and bid security shall be valid until *[indicate date]*. Any bid not accompanied by an acceptable bid security shall be rejected by the Procuring Entity as non-responsive.

16. Sealing and Marking of Bids

Each Bidder shall submit one copy of the first and second components of its Bid.

The Procuring Entity may request additional hard copies and/or electronic copies of the Bid. However, failure of the Bidders to comply with the said request shall not be a ground for disqualification.

If the Procuring Entity allows the submission of bids through online submission to the given website or any other electronic means, the Bidder shall submit an electronic copy of its Bid, which must be digitally signed. An electronic copy that cannot be opened or is corrupted shall be considered non-responsive and, thus, automatically disqualified.

17. Deadline for Submission of Bids

The Bidders shall submit on the specified date and time and either at its physical address or through online submission as indicated in paragraph 7 of the **IB**.

18. Opening and Preliminary Examination of Bids

18.1. The BAC shall open the Bids in public at the time, on the date, and at the place specified in paragraph 9 of the **IB**. The Bidders' representatives who are present shall sign a register evidencing their attendance. In case videoconferencing, webcasting or other similar technologies will be used, attendance of participants shall likewise be recorded by the BAC Secretariat.

In case the Bids cannot be opened as scheduled due to justifiable reasons, the rescheduling requirements under Section 29 of the 2016 revised IRR of RA No. 9184 shall prevail.

18.2. The preliminary examination of Bids shall be governed by Section 30 of the 2016 revised IRR of RA No. 9184.

19. Detailed Evaluation and Comparison of Bids

19.1. The Procuring Entity's BAC shall immediately conduct a detailed evaluation of all Bids rated "*passed*" using non-discretionary pass/fail criteria. The BAC shall consider the conditions in the evaluation of Bids under Section 32.2 of 2016 revised IRR of RA No. 9184.

19.2. If the Project allows partial bids, all Bids and combinations of Bids as indicated in the **BDS** shall be received by the same deadline and opened and evaluated simultaneously so as to determine the Bid or combination of Bids offering the lowest calculated cost to the Procuring Entity. Bid Security as required by **ITB** Clause 16 shall be submitted for each contract (lot) separately.

19.3. In all cases, the NFCC computation pursuant to Section 23.4.2.6 of the 2016 revised IRR of RA No. 9184 must be sufficient for the total of the ABCs for all the lots participated in by the prospective Bidder.

20. Post Qualification

Within a non-extendible period of five (5) calendar days from receipt by the Bidder of the notice from the BAC that it submitted the Lowest Calculated Bid, the Bidder shall submit its latest income and business tax returns filed and paid through the BIR Electronic Filing and Payment System (eFPS), and other appropriate licenses and permits required by law and stated in the **BDS**.

21. Signing of the Contract

The documents required in Section 37.2 of the 2016 revised IRR of RA No. 9184 shall form part of the Contract. Additional Contract documents are indicated in the **BDS**.

Section III. Bid Data Sheet

Bid Data Sheet

ITB Clause																			
5.2	For this purpose, contracts similar to the Project refer to Government Contracts which have the same major categories of work, which shall be: Construction / Repair / Rehabilitation / Landscaping of Parks, Buildings and Structures.																		
7.1	<i>Sub-contracting is not allowed.</i>																		
10.3	<i>No further instructions</i>																		
10.4	The key personnel must meet the required minimum years of experience set below:																		
	<table border="1" style="width: 100%; border-collapse: collapse;"> <thead> <tr> <th style="text-align: center;">Key Personnel</th> <th style="text-align: center;">General Experience</th> <th style="text-align: center;">Relevant Experience</th> </tr> </thead> <tbody> <tr> <td>Project Engineer</td> <td style="text-align: center;">1 year</td> <td style="text-align: center;">1 year</td> </tr> <tr> <td>Construction Foreman</td> <td style="text-align: center;">1 year</td> <td style="text-align: center;">1 year</td> </tr> <tr> <td>Skilled Workers</td> <td style="text-align: center;">1 year</td> <td style="text-align: center;">1 year</td> </tr> <tr> <td>Laborers</td> <td style="text-align: center;">1 year</td> <td style="text-align: center;">1 year</td> </tr> <tr> <td>Equipment Operator</td> <td style="text-align: center;">1 year</td> <td style="text-align: center;">1 year</td> </tr> </tbody> </table>	Key Personnel	General Experience	Relevant Experience	Project Engineer	1 year	1 year	Construction Foreman	1 year	1 year	Skilled Workers	1 year	1 year	Laborers	1 year	1 year	Equipment Operator	1 year	1 year
Key Personnel	General Experience	Relevant Experience																	
Project Engineer	1 year	1 year																	
Construction Foreman	1 year	1 year																	
Skilled Workers	1 year	1 year																	
Laborers	1 year	1 year																	
Equipment Operator	1 year	1 year																	
10.5	The minimum major equipment requirements are the following: <u>Equipment</u> Backhoe Dump truck Payloader Welding Machine Concrete Mixer																		
12	<i>Alternate Bids shall not be accepted.</i>																		
15.1	The bid security shall be in the form of a Bid Securing Declaration or any of the following forms and amounts: a. The amount of not less than 2,912,389.36, if bid security is in cash, cashier's/manager's check, bank draft/guarantee or irrevocable letter of credit; b. The amount of not less than 7,280,973.41, if bid security is in Surety Bond.																		
19.2	Partial bids are not allowed.																		
20	<i>No further instructions</i>																		
21	Additional contract documents relevant to the Project that may be required by existing laws and/or the Procuring Entity, such as construction schedule and S-curve, manpower schedule, construction methods, equipment utilization schedule, construction safety and health program approved by the DOLE, and other acceptable tools of project scheduling.																		

Section IV. General Conditions of Contract

1. Scope of Contract

This Contract shall include all such items, although not specifically mentioned, that can be reasonably inferred as being required for its completion as if such items were expressly mentioned herein. All the provisions of RA No. 9184 and its 2016 revised IRR, including the Generic Procurement Manual, and associated issuances, constitute the primary source for the terms and conditions of the Contract, and thus, applicable in contract implementation. Herein clauses shall serve as the secondary source for the terms and conditions of the Contract.

This is without prejudice to Sections 74.1 and 74.2 of the 2016 revised IRR of RA No. 9184 allowing the GPPB to amend the IRR, which shall be applied to all procurement activities, the advertisement, posting, or invitation of which were issued after the effectivity of the said amendment.

2. Sectional Completion of Works

If sectional completion is specified in the **Special Conditions of Contract (SCC)**, references in the Conditions of Contract to the Works, the Completion Date, and the Intended Completion Date shall apply to any Section of the Works (other than references to the Completion Date and Intended Completion Date for the whole of the Works).

3. Possession of Site

3.1 The Procuring Entity shall give possession of all or parts of the Site to the Contractor based on the schedule of delivery indicated in the **SCC**, which corresponds to the execution of the Works. If the Contractor suffers delay or incurs cost from failure on the part of the Procuring Entity to give possession in accordance with the terms of this clause, the Procuring Entity's Representative shall give the Contractor a Contract Time Extension and certify such sum as fair to cover the cost incurred, which sum shall be paid by Procuring Entity.

3.2 If possession of a portion is not given by the above date, the Procuring Entity will be deemed to have delayed the start of the relevant activities. The resulting adjustments in contract time to address such delay may be addressed through contract extension provided under Annex "E" of the 2016 revised IRR of RA No. 9184.

4. The Contractor's Obligations

The Contractor shall employ the key personnel named in the Schedule of Key Personnel indicating their designation, in accordance with **ITB** Clause 10.3 and specified in the **BDS**, to carry out the supervision of the Works.

The Procuring Entity will approve any proposed replacement of key personnel only if their relevant qualifications and abilities are equal to or better than those of the personnel listed in the Schedule.

5. Performance Security

5.1. Within ten (10) calendar days from receipt of the Notice of Award from the Procuring Entity but in no case later than the signing of the contract by both parties, the successful Bidder shall furnish the performance security in any of the forms prescribed in Section 39 of the 2016 revised IRR.

5.2. The Contractor, by entering into the Contract with the Procuring Entity, acknowledges the right of the Procuring Entity to institute action pursuant to RA No. 3688 against any subcontractor be they an individual, firm, partnership, corporation, or association supplying the Contractor with labor, materials and/or equipment for the performance of this Contract.

6. Site Investigation Reports

The Contractor, in preparing the Bid, shall rely on any Site Investigation Reports referred to in the **SCC** supplemented by any information obtained by the Contractor.

7. Warranty

7.1. In case the Contractor fails to undertake the repair works under Section 62.2.2 of the 2016 revised IRR, the Procuring Entity shall forfeit its performance security, subject its property(ies) to attachment or garnishment proceedings, and perpetually disqualify it from participating in any public bidding. All payables of the GOP in his favor shall be offset to recover the costs.

7.2. The warranty against Structural Defects/Failures, except that occasioned-on force majeure, shall cover the period from the date of issuance of the Certificate of Final Acceptance by the Procuring Entity. Specific duration of the warranty is found in the **SCC**.

8. Liability of the Contractor

Subject to additional provisions, if any, set forth in the **SCC**, the Contractor's liability under this Contract shall be as provided by the laws of the Republic of the Philippines.

If the Contractor is a joint venture, all partners to the joint venture shall be jointly and severally liable to the Procuring Entity.

9. Termination for Other Causes

Contract termination shall be initiated in case it is determined *prima facie* by the Procuring Entity that the Contractor has engaged, before, or during the

implementation of the contract, in unlawful deeds and behaviors relative to contract acquisition and implementation, such as, but not limited to corrupt, fraudulent, collusive, coercive, and obstructive practices as stated in **ITB** Clause 4.

10. Dayworks

Subject to the guidelines on Variation Order in Annex “E” of the 2016 revised IRR of RA No. 9184, and if applicable as indicated in the **SCC**, the Dayworks rates in the Contractor’s Bid shall be used for small additional amounts of work only when the Procuring Entity’s Representative has given written instructions in advance for additional work to be paid for in that way.

11. Program of Work

11.1. The Contractor shall submit to the Procuring Entity’s Representative for approval the said Program of Work showing the general methods, arrangements, order, and timing for all the activities in the Works. The submissions of the Program of Work are indicated in the **SCC**.

11.2. The Contractor shall submit to the Procuring Entity’s Representative for approval an updated Program of Work at intervals no longer than the period stated in the **SCC**. If the Contractor does not submit an updated Program of Work within this period, the Procuring Entity’s Representative may withhold the amount stated in the **SCC** from the next payment certificate and continue to withhold this amount until the next payment after the date on which the overdue Program of Work has been submitted.

12. Instructions, Inspections and Audits

The Contractor shall permit the GOP or the Procuring Entity to inspect the Contractor’s accounts and records relating to the performance of the Contractor and to have them audited by auditors of the GOP or the Procuring Entity, as may be required.

13. Advance Payment

The Procuring Entity shall, upon a written request of the Contractor which shall be submitted as a Contract document, make an advance payment to the Contractor in an amount not exceeding fifteen percent (15%) of the total contract price, to be made in lump sum, or at the most two installments according to a schedule specified in the **SCC**, subject to the requirements in Annex “E” of the 2016 revised IRR of RA No. 9184.

14. Progress Payments

The Contractor may submit a request for payment for Work accomplished. Such requests for payment shall be verified and certified by the Procuring Entity's Representative/Project Engineer. Except as otherwise stipulated in the **SCC**, materials and equipment delivered on the site but not completely put in place shall not be included for payment.

15. Operating and Maintenance Manuals

15.1. If required, the Contractor will provide "as built" Drawings and/or operating and maintenance manuals as specified in the **SCC**.

15.2. If the Contractor does not provide the Drawings and/or manuals by the dates stated above, or they do not receive the Procuring Entity's Representative's approval, the Procuring Entity's Representative may withhold the amount stated in the **SCC** from payments due to the Contractor.

Section V. Special Conditions of Contract

Special Conditions of Contract

GCC Clause	
2	<i>No further instructions</i>
4.1	<i>No further instructions</i>
6	<i>No further instructions</i>
7.2	<i>In case of permanent structures, such as buildings of types 4 and 5 as classified under the National Building Code of the Philippines and other structures made of steel, iron, or concrete which comply with relevant structural codes (e.g., DPWH Standard Specifications), such as, but not limited to, steel/concrete bridges, flyovers, aircraft movement areas, ports, dams, tunnels, filtration and treatment plants, sewerage systems, power plants, transmission and communication towers, railway system, and other similar permanent structures: Fifteen (15) years.</i>
10	No dayworks are applicable to the contract.
11.1	The Contractor shall submit the Program of Work to the Procuring Entity's Representative within <i>10 calendar</i> days of delivery of the Notice of Award.
11.2	No further instructions
13	The amount of the advance payment is <i>15% of the total contract price and schedule of payment.</i>
14	<i>No further instructions</i>
15.1	The date by which operating and maintenance manuals are required is <i>on the day of acceptance of the finished project</i> The date by which "as built" drawings are required is <i>on the day of acceptance of the finished project.</i>

Section VI. Specifications

**PROPOSED REDEVELOPMENT OF PEOPLE'S PARK
ARNALDO BLVD. ROXAS CITY
GENERAL SPECIFICATION**

- A. The work to be executed shall be done in accordance with the accompanying plans and specifications
- B. All works to be done shall be in the best quality of workmanship under the supervision of an Architect or a Civil Engineer.
- C. The construction shall conform to all the requirements of the National Building Code, as well as the local rules and regulations of the City or Municipality

D. SCOPE OF WORKS

- I. Site Preparation
- II. Excavation
- III. Backfilling
- IV. Concrete Works
- V. Proportioning of Concrete
- VI. Forms and Scaffolding
- VII. Concrete Slab Floors on Fill
- VIII. Steel Reinforcing Bars
- IX. Masonry
- X. Finishes
- XI. Floor Finishes
- XII. Tile Wall and Floor Finishes
- XIII. Carpentry and Lumber
- XIV. Roofing
- XV. Doors and Windows
- XVI. Electrical Works
- XVII. Plumbing Works
- XVIII. Metal
- XIX. Painting

I. SITE PREPARATION

Clearing and Grubbing

All surface objects and all trees, stumps, roots and other protruding obstructions, not designated to remain, shall be cleared and/or grubbed, including mowing as required, except as provided below:

- 1. Removal of undisturbed stumps and roots and nonperishable solid objects with a minimum depth of one (1) meter below subgrade or slope of embankment will not be required.
- 2. In areas outside of the grading limits of cut and embankment areas, stumps and nonperishable solid objects shall be cut off not more than 150 mm (6 inches) above the ground line or low water level.

Removal Of Structures and Obstructions

This Item shall consist of the removal wholly or in part, and satisfactory disposal of all buildings, fences, structures, old pavements, abandoned pipe lines, and any other obstructions which are not designated or permitted to remain, except for the obstructions to be removed and disposed off under other items in the Contract. It shall also include

the salvaging of designated material and backfilling the resulting trenches, holes, and pits.

The building site shall be leveled according to the plans and cleared of objectionable matters to a suitable sub-grade. All such unsuitable material shall be removed from the building site and spread uniformly over the areas adjacent the proposed building. or otherwise disposed off as may be directed by the Architect or the Engineer in charge of the construction.

The contractor shall make the necessary temporary facilities such as the bodega and comfort room. This section also includes temporary connections of electrical and plumbing utilities.

II. EXCAVATION

All excavations shall be made to grade indicated in the drawings, where the building site is covered with any kind of fill, the excavation for footings should be made deeper until the stratum for safe bearing capacity of the soil reached.

Whenever water is encountered in the excavation process, It shall be removed by bailing or pumping, care being taken that the surrounding soil particles are not disturbed or removed.

III. BACKFILLING

After concrete for foundations reached the curing period to withstand pressure resulting from fills, the materials removed from excavations shall be used for backfills around them. Backfills shall be placed in layers not exceeding 150mm in thickness, and each layer shall be thoroughly compacted wetting. tamping and rolling.

IV. CONCRETE WORKS

All concrete shall be mixed thoroughly until there is a uniform distribution of the cement and aggregates, and should be deposited as nearly as practicable in its final position, care being taken to avoid segregation of the aggregates.

Water to be used for mixing concrete shall be clean and free from injurious amount of oil, acids, alkalis, salts, and other organic materials.

All reinforced concrete columns, beams, and slabs shall be according to design as shown on plan.

Materials, Portland cement ASTM C 150, Type I, Sand ASTM C 897

V. PROPORTIONING OF CONCRETE

All concrete works shall be done in accordance with the standard specifications for plain and reinforced concrete as adopted by the Government. Cement to be used shall be Portland Cement or equivalent.

The following proportions of concrete mixtures shall be used for the various parts of the building:

Columns and Footings - Class A (1:2:4)

Wall Footings - Class A (1:2:4)

Reinf. Concrete Beams and Slabs - Class A (1:2:4)

Slab on Fill - Class B (1:2 1/2:5)

The fine aggregate for concrete shall consist of natural sand, or of inert materials with similar characteristics, having clean, hard and durable grains, free from organic matter or loam.

The coarse aggregate for concrete shall consist of crushed rock of durable and strong qualities or clean and hard gravel. Size of the coarse aggregate shall vary from 20mm to 40mm (3/4" to 1-1/2")

VI. FORMS AND SCAFFOLDINGS

All forms for concrete shall be properly braced or connected together so as to maintain the correct position and shapes of the concrete members. Forms shall be constructed sufficiently tight to prevent bulging and seepage of water.

Forms shall not be removed until the concrete has attained sufficient strength to support its own weight and any loads that may be placed on it.

Scaffoldings must be properly braced to prevent accidents. Scaffolding materials may be lumber or steel.

VII. CONCRETE SLAB FLOORS ON FILL

Concrete slabs on fill shall be poured on a gravel bed not less than 100mm thick. Each concrete slab course to be poured shall not be more than one-meter-wide, and each course shall be poured alternately to the indicated floor finish.

VIII. STEEL REINFORCING BARS

All steel reinforcing bars to be used in the construction shall consist of round deformed bars with lugs, projection on their sides to provide a greater bond between the concrete and the steel. Sizes range is 10mm dia. 12mm dia., 16mm dia.

All steel reinforcing bars shall be accurately placed and secured against displacement by tying them together at each bar intersection with Gauge #16 galvanized iron wire.

The steel reinforcing bars indicated for footings, columns, slabs, beams, girders and other concrete members shall all conform to the number, size and spacing as indicated in the drawings or schedule of steel reinforcements.

IX. MASONRY

Concrete hollow blocks to be used in this project shall be 5 inches thick. All exterior concrete hollow blocks to be used for the first floor walls shall be at least 150mm thick, while concrete hollow blocks for interior wall unless otherwise indicated, shall be 100mm thick. For interior CHB walls where plumbing pipes and fittings shall be located, the thickness shall be at least 150mm thick.

Concrete hollow blocks to be used for wall above the first floor, shall be 150mm thick. The concrete hollow block walls shall be laid, and the cells filled with cement mortar consisting of 1 part Portland cement and 3 parts sand by volume. They shall be reinforced with round deformed bars, 10mm diameter, spaced not more than 1.20 meters on center both ways.

X. FINISHES

Interior walks shall be of Smooth Plain Cement Plaster finish unless otherwise specified in the plans.

Exterior walks shall be of Smooth Plain Cement Plaster finish.

This section includes Portland Cement Plaster materials

- a) Base - Coat Cement: Portland cement, ASTM C 150, Type I
- b) Job - Mixed Finish Coat: ASTM C 926, Portland Cement, ASTM C 150 Type I
- c) Sand Aggregates for Base Coat: ASTM C 897
- d) Water: Potable and clean

XI. FLOOR FINISHES

All materials to be used as floor finishes for the rooms shall be plain cement finish and general areas of the building shall be plain cement finish.

XII. TILE WALL AND FLOOR FINISHES

The toilet and bathroom floors shall be finished with 0.60m x 0.60 CERAMIC TILES and approved equivalent.

The walls of the toilets, bathrooms shall be 0.60m x 0.60m CERAMIC TILES and approved equivalent.

XIII. CARPENTRY AND LUMBER

Lumber shall be approved quality of the respective kind required for the various parts of the work, self-seasoned, thoroughly dried and free from large, loose and unsound knots, sap, shakes or other imperfections impairing its strength, durability and appearance. Tanguile shall be used for door jambs, corbets, hangers, ceilings joist and other framings. Lumber standards must comply with Philippine Lumber Standard and with applicable grading rules of local inspection agencies.

XIV. ROOFING

The roof shall be covered with 0.50 mm Long Span Clay Roof Tile Design roofing. The roofing sheet shall be secured to the purlins. Gutter will be Pre-Painted Spanish Gutter. All accessories must conform to standard of ASTM. All overlaps and connections must be properly screwed and riveted.

XV. DOORS AND WINDOWS

This section includes Solid Wood Doors and Hollow - Core Doors

Material: Kiln Dry "Hard wood" for solid door and ordinary tanguile for hollow - core wood doors and approved equivalent.

Install wood doors to comply with manufacturer's written instructions, referenced quality standard, and as indicated on drawings.

Location: Toilet and Bath

This section also includes standard Aluminum Framed Windows with ¼' thick bronze glass.

Materials shall conform good quality and to be installed by the required fabricator and must comply with manufacturer's specification and recommendations for installation of window, units, hardware, operators and other components of the work.

XVI. ELECTRICAL WORKS

Basic Electrical Requirements

- A. All electrical works shall be done in accordance with all applicable current edition of the Philippine Electrical Code and shall conform to requirements, agencies and Power Company with jurisdiction over this project. All work for this installation shall be done under the direct supervision of duly licensed Electrical Engineer or Master Electrician.
- B. All electrical materials, devices, fixtures, fittings and hardware shall be of suitable and approve type for location purposes.

XVII. PLUMBING WORKS

All plumbing works for this project shall be done in accordance with the approved plans and under the direct supervision and control of a licensed Sanitary Engineer or Master Plumber.

Piping shall be properly graded or pitched to ensure easy circulation, drainage and prevent water hammer and noise.

The plumbing installation shall conform with the provisions of the National Plumbing Code and the rules and regulations enforced in the locality.

Piping for drain, waste and vent shall be done using GI push - on system. For the in-house water supply installation, GI pipes and fittings shall be used.

The plumbing fixtures and accessories to be provided and installed shall be follows:

Water Closets -HCG or approved equivalent

Lavatories - HCG or approved equivalent

Kitchen Sink - Stainless Steel

Soap Holder - HCG or approved equivalent

Toilet Paper Holder - Stainless Steel

Floor Drain - Stainless Steel

Where a sanitary sewer system of sewage disposal is not in operation in the locality, standard septic vault shall be constructed as shown in the drawings.

XIII. METAL

Steel Grills and Ornamental Railings

- A. General: For smooth fabrications exposed to view in the completed work, provide materials with smooth, flat, surfaces without blemishes. Do not use materials with exposed pitting. Seam marks, roller marks or roughness.
- B. This section includes ornamental railing fabricated from custom shapes.
- C. Steel and Iron: Provide steel and iron in form indicated to comply with the following requirements

Tubing: Cold formed, ASTM A 500

Steel Plate, Shapes and Bar: ASTM 36

XIV PAINTING

A. This section includes surface preparation and field painting of the following:

Exposed exterior and surfaces

Surface preparation, priming and finish coat specified in this section are in addition to shop priming, and surface treatment specified in other sections.

B. Material Compatibility: Provide block fillers, primers, undercoats, finish-coat material and related materials that are compatible with one another and the substrates indicated under conditions of service and application, as demonstrated by manufacturer based on testing and field experienced.

C. Materials Quality: Provide manufacturer's best quality paint material of the various coating types specified. Paint-material containers not displaying manufacturer's product identification will not be acceptable.

Proprietary Names: Use of manufacturer's proprietary product names to designate colors or materials is not intended to imply that products named are required to be used to the exclusion of equivalent products of other manufacturers.

Cementitious Filler: Not shrink formulations: white Portland cement with fine silicate aggregate, zinc-oxide pigment, and reinforcing chemical binder as approved.

Thinner: As recommended by each manufacturer for the respective product.

Equipment: Provide scaffolding, staging, drop cloths, covers, brushes, rollers and spraying and other equipment of the type, grade and size required for the proper execution of work.

D. Color: Colors of items or surfaces to be painted are indicated on the drawings and schedules. Provide custom color of the finished paint system to match the Architect's sample.

E. Mixing: All materials shall be factory or supplier mixed to proper application consistency.

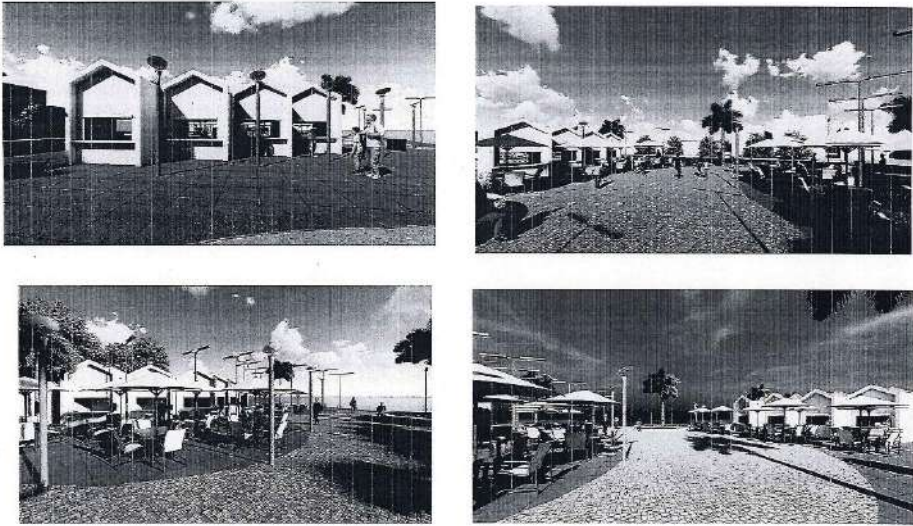
Perform job mixing and tinting only as approved by the Architect.

F. Application:


General: Apply finish systems in accordance with the manufacturer's written instructions.

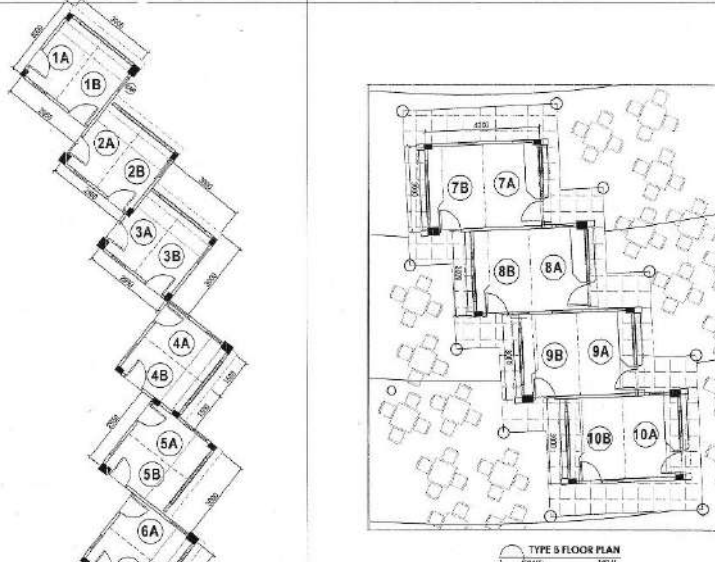
Use applicators and techniques best suited for substance and type of material being applied. Apply to the dry film mil thickness for each coat as recommended by the manufacturer. Finish coats shall cover substrate and produce a uniform finish surface, free from sags, lap mark and other defects.

Section VII. Drawings




PERSPECTIVES

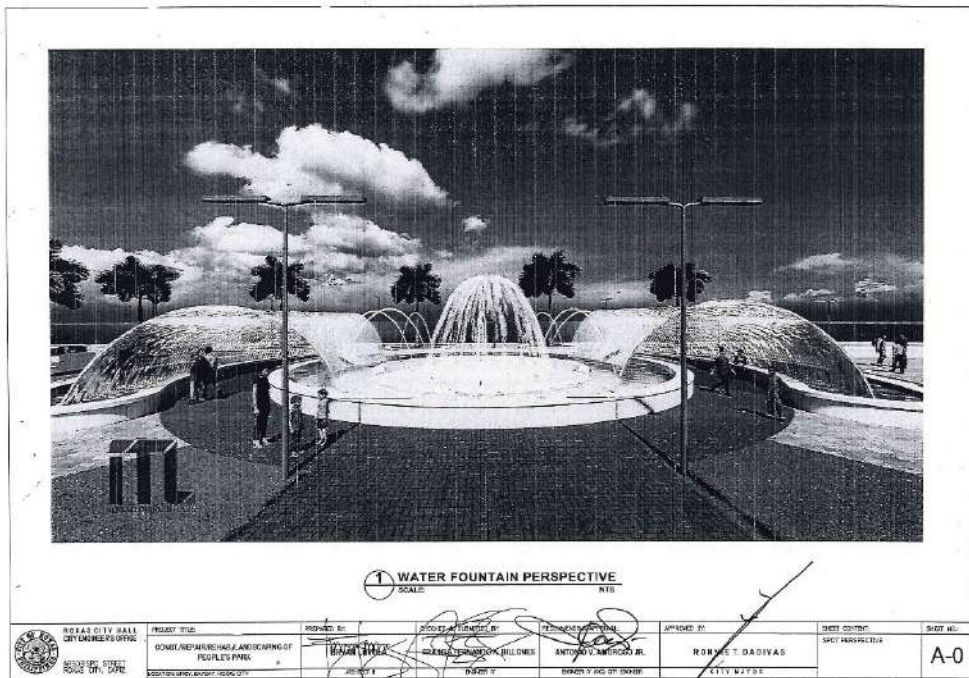
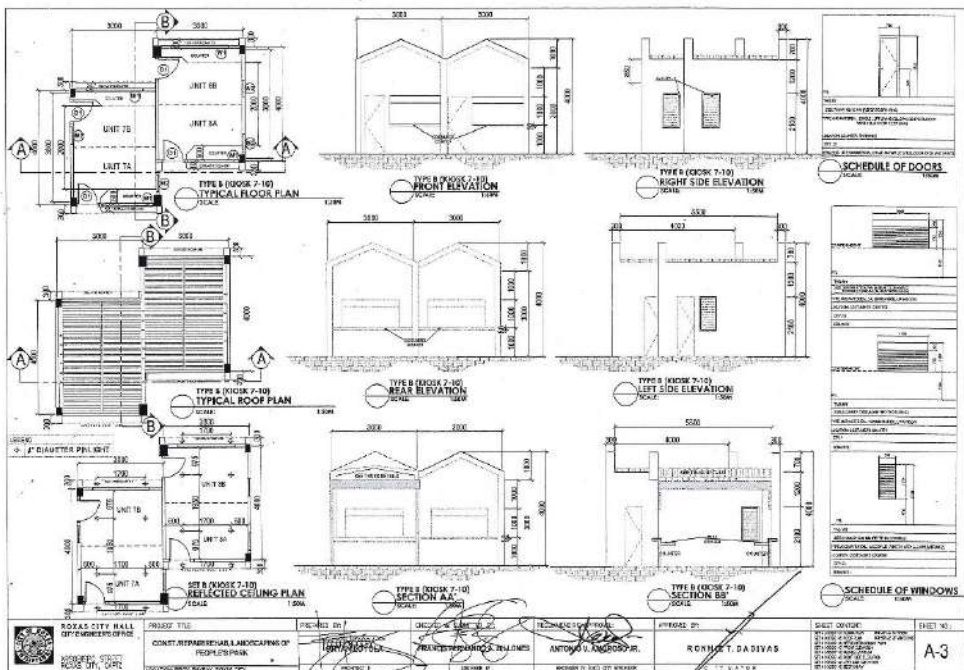
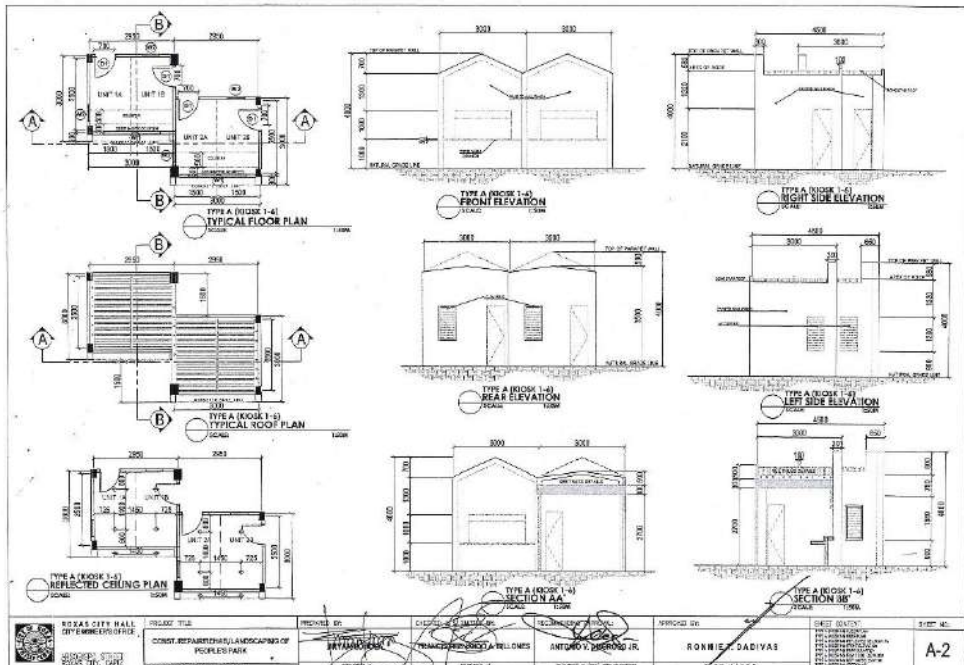
 MIAMI CITY HALL CITY ENGINEERING DEPT. 3000 BISCAYNE BLVD., SUITE 200 MIAMI, FL 33133	PROJECT TITLE: CONCEPTUAL LANDSCAPE ARCHITECTURE OF PEOPLES PARK	PROJECT NO.: 1511111111	CHECKED BY: FRANCISCO RUIZ & BELLORES	REVISIONS BY: ANTONIO V. ANDRÉS JR.	APPROVED BY: RONNIE RADIVALS	SHEET CONTENT: PERSPECTIVES	SHEET NO.: A-0
---	--	----------------------------	--	--	---------------------------------	--------------------------------	-------------------

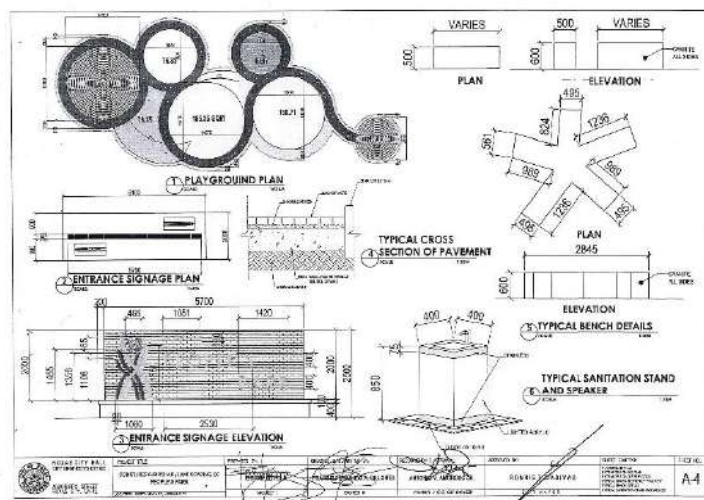
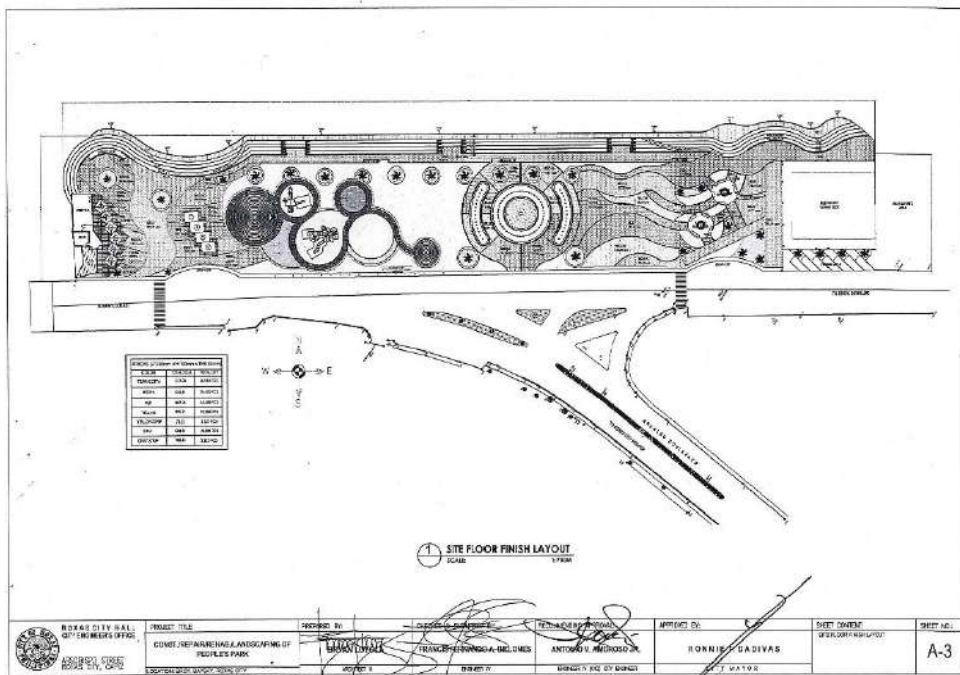
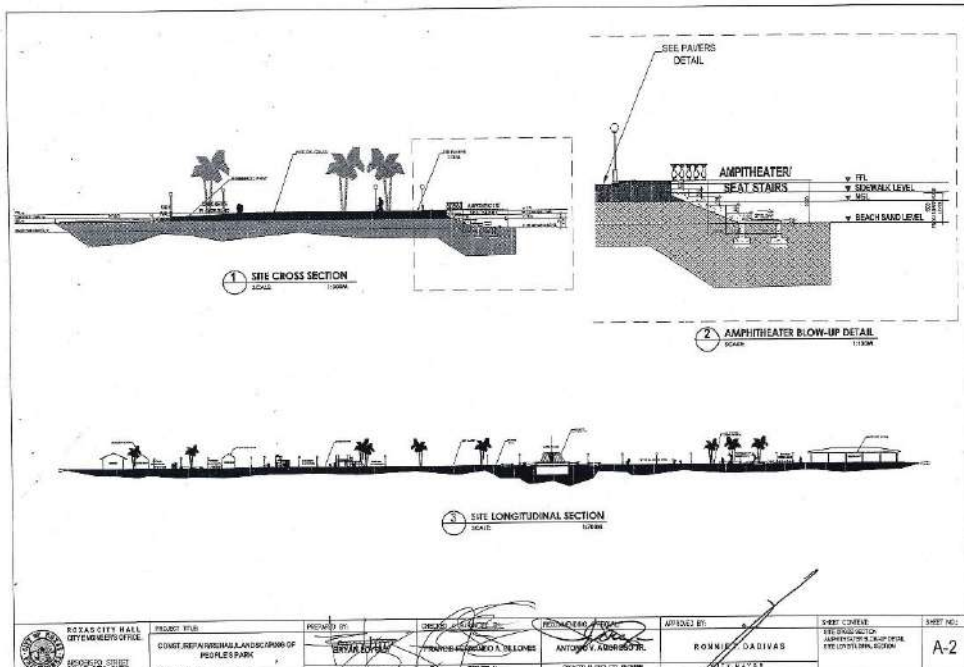


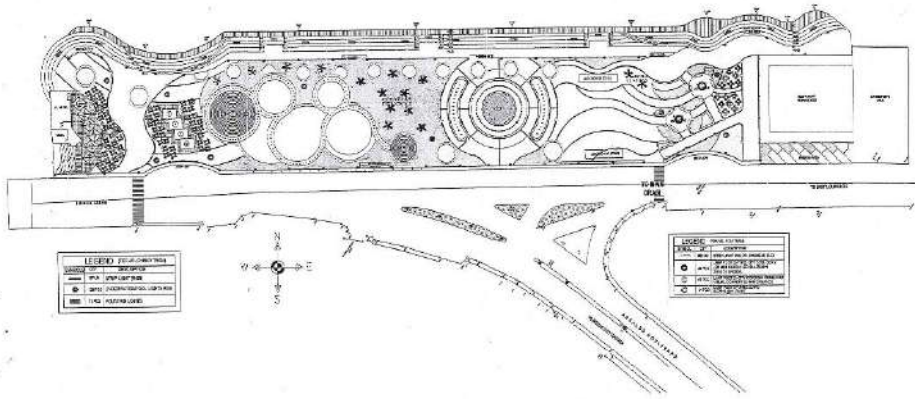
TYPE A FLOOR PLAN
SCALE: 1/8" = 1'-0"

TYPE B FLOOR PLAN
SCALE: 1/8" = 1'-0"

 MIAMI CITY HALL CITY ENGINEERING DEPT. 3000 BISCAYNE BLVD., SUITE 200 MIAMI, FL 33133	PROJECT TITLE: CONCEPTUAL LANDSCAPE ARCHITECTURE OF PEOPLES PARK	PROJECT NO.: 1511111111	CHECKED BY: FRANCISCO RUIZ & BELLORES	REVISIONS BY: ANTONIO V. ANDRÉS JR.	APPROVED BY: RONNIE RADIVALS	SHEET CONTENT: FLOOR PLANS	SHEET NO.: A-1
---	--	----------------------------	--	--	---------------------------------	-------------------------------	-------------------

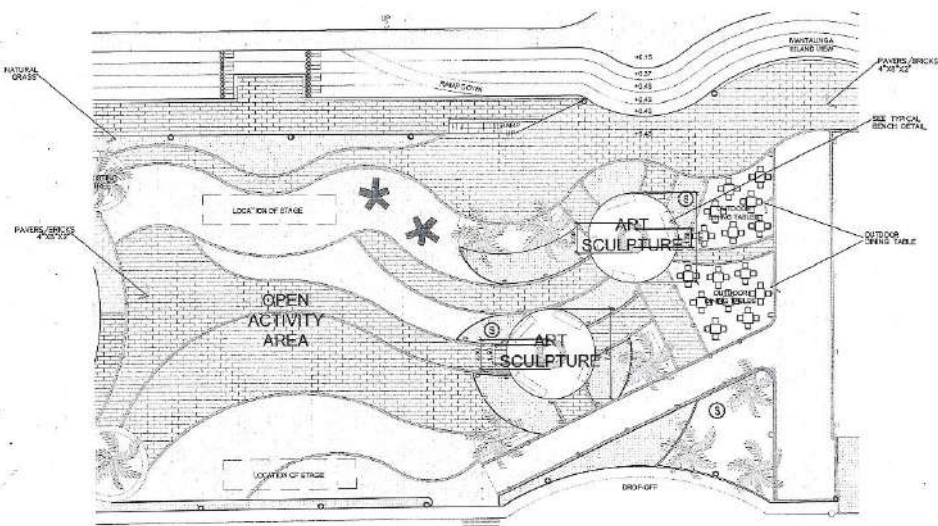






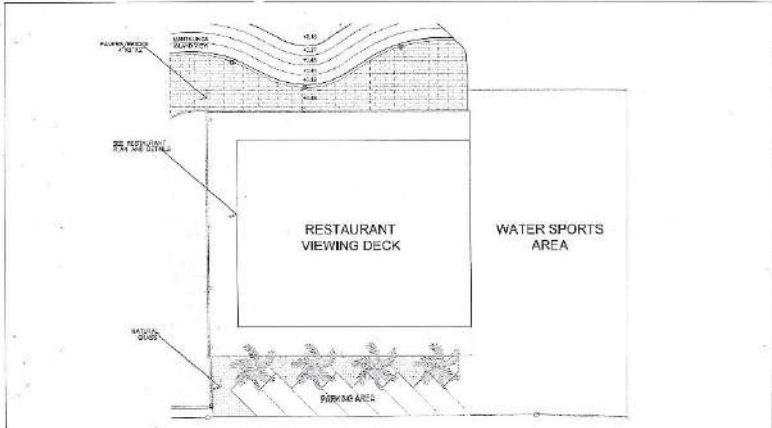
1 SITE LIGHTING LAYOUT
SCALE: 1/8\"/>

TEXAS CITY HALL CITY ENGINEERS OFFICE APPROVED STREET ROXAS CITY, TEXAS	PROJECT TITLE	PREPARED BY	DESIGNED BY	REVIEWED BY	APPROVED BY	SHEET NUMBER	SHEET NO.
	CONSTRUCTION AND LANDSCAPING OF PEOPLE'S PARK	BRYAN LOYOLA	FRANCISCO A. BELLAS	ANTONIO A. BELLAS JR.	RONNIE D. DIVAS	ENGINEER/ARCHITECT	E-1



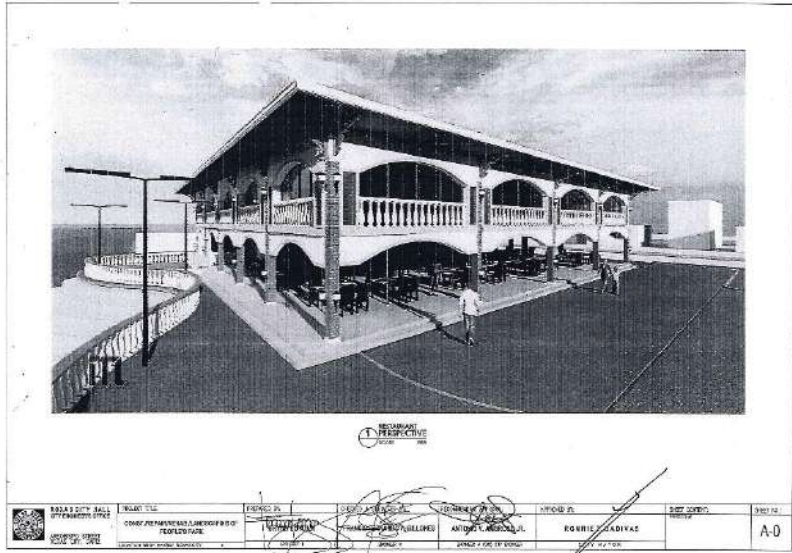
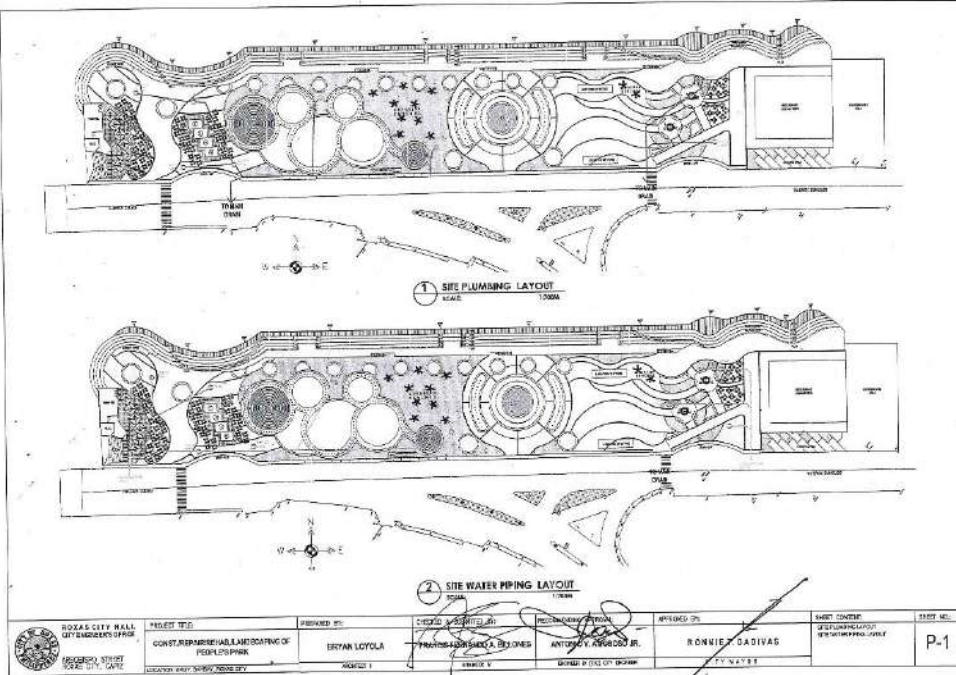
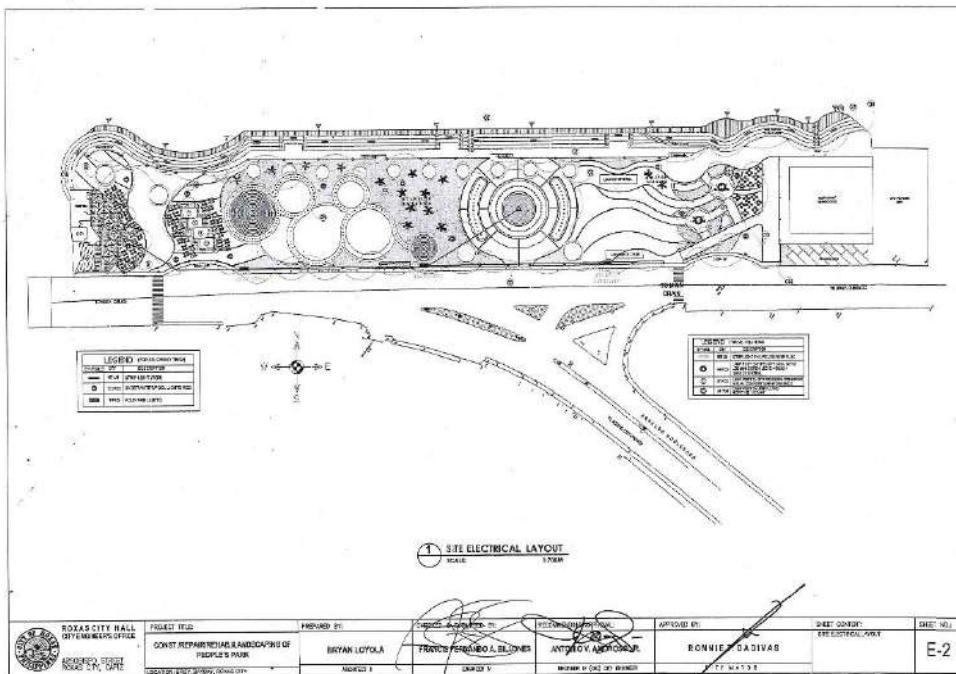
1 OPEN ACTIVITY AREA AND ART
SCULPTURE AREA
SITE BLOW-UP PLAN
SCALE: 1/8\"/>

TEXAS CITY HALL CITY ENGINEERS OFFICE APPROVED STREET ROXAS CITY, TEXAS	PROJECT TITLE	PREPARED BY	DESIGNED BY	REVIEWED BY	APPROVED BY	SHEET NUMBER	SHEET NO.
	CONSTRUCTION AND LANDSCAPING OF PEOPLE'S PARK	BRYAN LOYOLA	FRANCISCO A. BELLAS	ANTONIO A. BELLAS JR.	RONNIE D. DIVAS	ENGINEER/ARCHITECT	A-8



1 RESTAURANT VIEWING DECK AND
WATER SPORTS AREA
SITE BLOW-UP PLAN
SCALE: 1/8\"/>

TEXAS CITY HALL CITY ENGINEERS OFFICE APPROVED STREET ROXAS CITY, TEXAS	PROJECT TITLE	PREPARED BY	DESIGNED BY	REVIEWED BY	APPROVED BY	SHEET NUMBER	SHEET NO.
	CONSTRUCTION AND LANDSCAPING OF PEOPLE'S PARK	BRYAN LOYOLA	FRANCISCO A. BELLAS	ANTONIO A. BELLAS JR.	RONNIE D. DIVAS	ENGINEER/ARCHITECT	A-9



Section VIII. Bill of Quantities

**Public Bidding for the Construction / Repair / Rehabilitation and Landscaping of
People's Park at Barangay Baybay, Roxas City under ITB No. RC-2022-008i**

Item No.	Item Description	QTY	UOM	Unit Cost	Total Cost
GENERAL REQUIREMENTS					
1	TEMPORARY FACILITIES	1	LOT		
2	TEMPORARY FACILITIES – WATER CONNECTION AND POWER CONSUMPTION AT JOB SITE, FOR THE ENGINEERS	1	LOT		
3	SAFETY AND HEALTH	1	LOT		
4	PERMITS, LICENSES	1	LOT		
5	MOBILIZATION / DEMOBILIZATION	1	LOT		
SITE DEVELOPMENT WORKS					
6	TEMPORARY SITE ENCLOSURE	280	LOT		
7	CLEARING AND GRUBBING	9,364.75	SQ.M		
8	COMPACTION	46,823.75	SQ.M		
9	FILLING MATERIALS	12,175	CU.M		
AMPHITHEATER					
SITWORKS					
10	DEMOLITION	1	LOT		
11	EXCAVATION	288.38	CU.M		
12	GRAVEL BEDDING	51.27	CU.M		
STRUCTURAL					
13	SEAT STAIR FOUNDATION	138.42	CU.M		
14	SEAT STAIR CONCRETE WALL	153.80	CU.M		

15	RAMP UP	76.90	CU.M		
16	SEAT STAIRS	577.87	CU.M		
17	CONCRETE BALUSTER	1	LOT		
18	PAINTING WORKS	1,310.40	SQ.M		
	PUMPROOM / ELECTRICAL ROOM SITE WORKS				
19	EXCAVATION	18.93	CU.M		
20	GRAVEL BEDDING	2.82	CU.M		
21	SOIL POISONING	115	SQ.M		
	CIVIL WORKS				
22	FOOTING	4.49	CU.M		
23	WALL FOOTING	5.91	CU.M		
24	COLUMN	8.63	CU.M		
	BEAMS				
25	TIE BEAM	3.80	CU.M		
26	ROOF BEAM	8.60	CU.M		
27	CONCRETE GUTTER	19.87	CU.M		
28	SLAB ON FILL	11.50	CU.M		
	FORMWORKS AND SCAFFOLDINGS				
29	FORMWORKS	119.83	SQ.M		
	MASONRY WORKS				
30	EXTERIOR WALL	155.77	SQ.M		
31	INTERIOR WALL	40.30	SQ.M		
32	PLASTERING	450.96	SQ.M		
	FINISHES				
33	FLOOR FINISH	115	SQ.M		
	PAINTING WORKS				
34	EXTERIOR AND PAINTING WORKS	518.60	SQ.M		
35	CEILING	115	SQ.M		
	STRUCTURAL STEEL WORKS				
36	ROOFING AND INSULATION	109.71	SQ.M		

37	ROOF FRAMING	415.13	SQ.M		
	CARPENTRY WORKS				
38	CEILING WORKS	115	SQ.M		
	DOORS AND WINDOWS WINDOWS				
39	W1 ALUMINUM FRAMED WINDOW	1	SET		
40	W2 ALUMINUM FRAMED WINDOW	2	SETS		
	DOORS				
41	D1 TWO WOODEN SWING PANEL DOOR	2	SETS		
42	D2 WOODEN PANEL DOOR	1	SET		
43	D3 WOODEN PANEL DOOR	1	SET		
	ELECTRICAL WORKS				
44	CONDUITS BOXING FITTINGS	1	LOT		
45	WIRES AND WIRING DEVICES	1	LOT		
46	PANEL BOARD WITH MAIN AND BRANCH BREAKERS	1	LOT		
47	LIGHTING FIXTURES AND LAMPS	1	LOT		
	PLUMBING				
48	PLUMBING	1	LOT		
	SIGNAGES				
49	WALL FOOTING	0.70	CU.M		
50	CHB WALL	13.11	SQ.M		
51	PLASTERING	22.80	SQ.M		
52	INSTALLATION OF BRICKS	13.11	SQ.M		
53	PAINT WORKS	12.20	SQ.M		
54	STAINLESS LETTERS	1	LOT		
	CONCRETE BENCHES TREE CONCRETE BENCH				
55	STRUCTURAL WORKS	15	SETS		
56	PAINTING WORKS	188.50	SQ.M		

57	TILE WORKS	114.98	SQ.M		
	STARFISH BENCH				
58	STRUCTURAL WORKS	12	SETS		
59	TILE WORKS	45.17	SQ.M		
	CURBS, WALKWAY AND PAVEMENT PAVEMENTS				
60	PAVER BLOCKS (FOUNTAIN)	1,059.07	SQ.M		
61	PAVER BLOCKS (PORTIONS OF PLAZA AREA)	2,908.13	SQ.M		
62	ORDINARY GRASS	115	SQ.M		
63	LANDSCAPING	1	LOT		
64	CONCRETE CURB	115	L.M.		
	WATER SPORTS AREA DRIVEWAY				
65	CONCRETE WORKS	652.97	CU.M		
	ART SCULPTURE SITE WORKS				
66	EXCAVATION	4.60	CU.M		
67	BACKFILL	45.16	CU.M		
	STRUCTURAL WORKS				
68	WALL FOOTING	2.17	CU.M		
69	MASONRY WORKS	25.30	SQ.M		
70	PLASTERING	95.76	SQ.M		
71	UPPER FLOORING	45.16	SQ.M		
72	GROUND FLOORING	406.44	SQ.M		
73	BENCH	8	SETS		
74	PAINTING WORKS	107.39	SQ.M		
75	TILE WORKS BENCH	8	SETS		
76	ART SCULPTURE	2	SETS		
	PLAYGROUND				
77	CONCRETING OF PLAY GROUND AREA	825.78	SQ.M		
78	OUTDOOR PLAYSET	1	LOT		
	PLUMBING WORKS				

79	DRAINAGE LINES	1	LOT		
80	WATER LINES	1	LOT		
	FOUNTAIN SITE WORKS				
81	EXCAVATION	2287.50	CU.M		
82	GRAVEL BEDDING	18.06	CU.M		
	STRUCTURAL WORKS				
83	REINFORCED CONCRETE	285.22	CU.M		
84	MASONRY	361.27	SQ.M		
85	WATER PROOFING	1,039.12	SQ.M		
86	PAINT WORKS	2,408.48	SQ.M		
87	FOUNTAIN AND PUMP ROOM: EQUIPMENT AND ACCESSORIES	1	LOT		
	PARK LIGHTINGS				
88	AMPHITHEATER LIGHTS	19	PCS		
89	STRIP LIGHT YELLOW (AMPHITHEATER)	1,060	LM		
90	STRIP LIGHT VIOLET	25	LM		
91	LAMPOST	24	PCS		
92	PANELBOARDS, ETC.	1	LOT		
	CONSTRUCTION OF KIOSKS				
93	FOUNDATION, COLUMN, TIE BEAM	46.11	CU.M		
94	SLAB	22.08	CU.M		
95	ROOF FRAMING AND ROOFING	419.68	SQ.M		
96	DOORS AND WINDOWS	1	LOT		
97	MASONRY WORKS	454.94	SQ.M		
98	CONCRETE COUNTER	5.52	CU.M		
99	CEILING WORKS	117.30	SQ.M		
100	PAINTING WORKS	1,316.15	SQ.M		
101	TILE WORKS	443.90	SQ.M		
102	ELECTRICAL WORKS	1	LOT		
103	PLUMBING WORKS	1	LOT		

104	FURNITURES	1	LOT		
	SITE WORKS				
105	EXCAVATION	663.09	CU.M		
106	GRAVEL BEDDING	13.26	CU.M		
107	SOIL POISONING	809.37	SQ.M		
	CIVIL WORKS				
108	FOOTING	119.36	CU.M		
109	WALL FOOTING	9	CU.M		
110	COLUMN	14.13	CU.M		
	BEAMS				
111	TIE BEAM	36.09	CU.M		
112	SECOND FLOOR BEAM	52.87	CU.M		
113	ROOF BEAM	16.75	CU.M		
	SLAB				
114	SECOND FLOOR SLAB	81.08	CU.M		
115	SLAB ON FILL	82.37	CU.M		
116	RAMP	2.59	CU.M		
117	STAIRS	4.03	CU.M		
118	LINTEL ARC	7.13	CU.M		
	FORMWORKS AND SCAFFOLDINGS				
119	FORMWORKS	581.44	SQ.M		
	MASONRY WORKS				
120	INTERIOR WALL	605.73	SQ.M		
121	PLASTERING	1,971.39	SQ.M		
	ROOF AND ROOF FRAMING				
122	ROOF FRAMING	1	LOT		
123	ROOF	1	LOT		
124	DOORS AND WINDOWS	1	LOT		
	CEILING WORKS				
125	GROUND FLOOR	1,060.53	SQ.M		
126	SECOND FLOOR	1,336.88	SQ.M		

127	PAINTING WORKS	5,024.12	SQ.M		
	TILE WORKS				
128	GROUND FLOOR	926.81	SQ.M		
129	SECOND FLOOR	718.75	SQ.M		
	BRICKS				
130	GROUND FLOOR	162.39	SQ.M		
131	SECOND FLOOR	185.19	SQ.M		
132	MISCELLANEOUS WORKS	1	LOT		
	ELECTRICAL WORKS				
133	GROUND FLOOR	1	LOT		
134	SECOND FLOOR	1	LOT		
	PLUMBING WORKS				
135	GROUND FLOOR	1	LOT		
136	SECOND FLOOR	1	LOT		
TOTAL					

Name of Bidder _____.

[signature]

[in the capacity of]

Duly authorized to sign Bid for and on behalf of _____

Section IX. Checklist of Technical and Financial Documents

Checklist of Technical and Financial Documents

I. TECHNICAL COMPONENT ENVELOPE

Class "A" Documents

Legal Documents

- (a) Valid PhilGEPS Registration Certificate (Platinum Membership) (all pages);
or
- (b) Registration certificate from Securities and Exchange Commission (SEC), Department of Trade and Industry (DTI) for sole proprietorship, or Cooperative Development Authority (CDA) for cooperatives or its equivalent document;
and
- (c) Mayor's or Business permit issued by the city or municipality where the principal place of business of the prospective bidder is located, or the equivalent document for Exclusive Economic Zones or Areas;
and
- (e) Tax clearance per E.O. No. 398, s. 2005, as finally reviewed and approved by the Bureau of Internal Revenue (BIR).

Technical Documents

- (f) Statement of the prospective bidder of all its ongoing government and private contracts, including contracts awarded but not yet started, if any, whether similar or not similar in nature and complexity to the contract to be bid; **and**
- (g) Statement of the bidder's Single Largest Completed Contract (SLCC) similar to the contract to be bid, except under conditions provided under the rules; **and**
- (h) Philippine Contractors Accreditation Board (PCAB) License;
or
Special PCAB License in case of Joint Ventures;
and registration for the type and cost of the contract to be bid; **and**
- (i) Original copy of Bid Security. If in the form of a Surety Bond, submit also a certification issued by the Insurance Commission;
or
Original copy of Notarized Bid Securing Declaration; **and**
- (j) Project Requirements, which shall include the following:
 - a. Organizational chart for the contract to be bid;
 - b. List of contractor's key personnel (e.g., Project Manager, Project Engineers, Materials Engineers, and Foremen), to be assigned to the contract to be bid, with their complete qualification and experience data;
 - c. List of contractor's major equipment units, which are owned, leased, and/or under purchase agreements, supported by proof of ownership or certification of availability of equipment from the

- equipment lessor/vendor for the duration of the project, as the case may be; **and**
- (k) Original duly signed Omnibus Sworn Statement (OSS); **and** if applicable, Original Notarized Secretary's Certificate in case of a corporation, partnership, or cooperative; or Original Special Power of Attorney of all members of the joint venture giving full power and authority to its officer to sign the OSS and do acts to represent the Bidder.

Financial Documents

- (l) The prospective bidder's audited financial statements, showing, among others, the prospective bidder's total and current assets and liabilities, stamped "received" by the BIR or its duly accredited and authorized institutions, for the preceding calendar year which should not be earlier than two (2) years from the date of bid submission; **and**
- (m) The prospective bidder's computation of Net Financial Contracting Capacity (NFCC).

Class "B" Documents

- (n) If applicable, duly signed joint venture agreement (JVA) in accordance with RA No. 4566 and its IRR in case the joint venture is already in existence;
or
duly notarized statements from all the potential joint venture partners stating that they will enter into and abide by the provisions of the JVA in the instance that the bid is successful.

II. FINANCIAL COMPONENT ENVELOPE

- (o) Original of duly signed and accomplished Financial Bid Form; **and**

Other documentary requirements under RA No. 9184

- (p) Original of duly signed Bid Prices in the Bill of Quantities; **and**
- (q) Duly accomplished Detailed Estimates Form, including a summary sheet indicating the unit prices of construction materials, labor rates, and equipment rentals used in coming up with the Bid; **and**
- (r) Cash Flow by Quarter.

